

## INSTALLATION INSTRUCTIONS

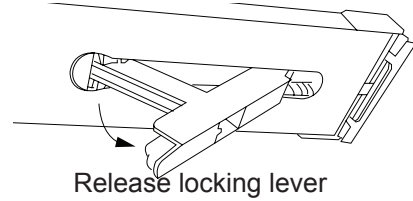
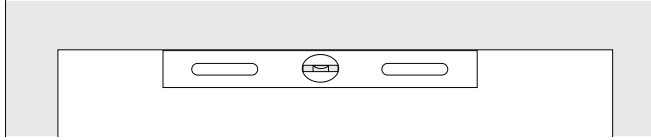
# LEVOLOR® NO-DRILL HEADRAIL MOUNTING SYSTEM

Cellular, Banded and Roller Shades

**NOTE:** The No-Drill Headrail System will come with the shade installation brackets already attached. No drilling is necessary to install this shade. A Flat head screwdriver is needed to remove the No-Drill Headrail System.

### 1. Install the No-Drill Headrail System

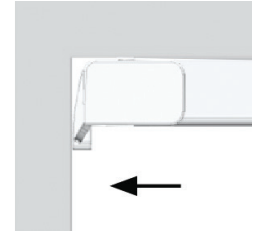
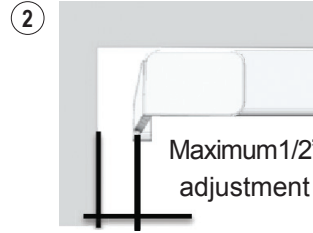
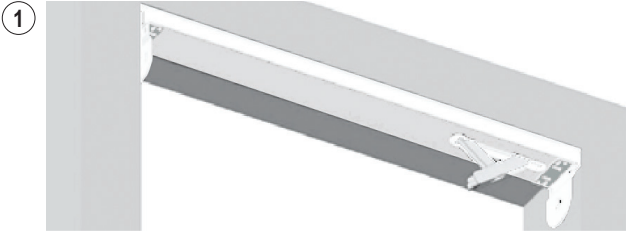
Make sure mounting surface is level



Release locking lever

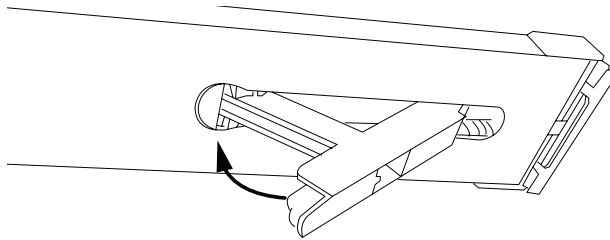
#### 1a. Install the No-Drill Headrail System - Placement and Width Adjustment

**IMPORTANT** If mounting on a smooth surface such as painted aluminum or tile you must apply the double sided adhesive (included) to the end caps to keep the mounting system secure. Remove release liner from one side of the adhesive and apply to both end caps and press firmly to adhere.



- (1) Place the No-Drill Headrail System in the window opening so that the end with the lever is up tight against the window casing.
- (2) If there is a gap at the non-lever end of the rail, simply slide the end cap until it touches the window casing. See **END CAP ADJUSTMENT** on page 2 if you accidentally pull the end cap out too far. If mounting on a smooth surface, remove the release liners from the double sided adhesive on the endcaps. Replace mounting system.

#### 1b. Install the No-Drill Headrail System - Lock in Place



Make sure that the mounting system is level. Press up on the lever to lock the mounting system in place.

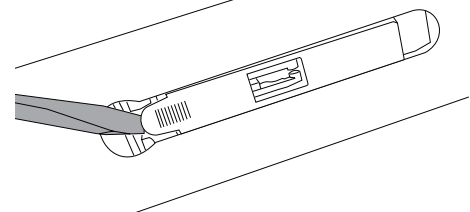
### 2. Install the Shade

Follow the instruction in the installation booklet that came with your shade to install the shade into the mounting brackets on the No-Drill Headrail System.

### 3. Remove the No-Drill Headrail System

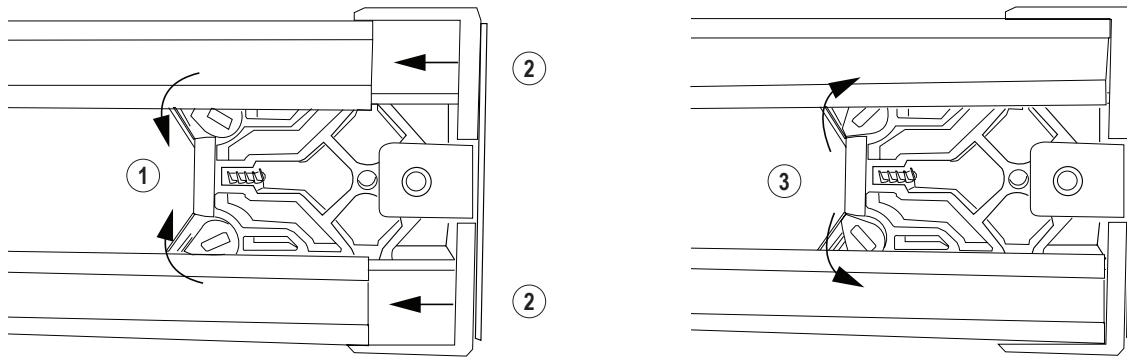
**IMPORTANT** First, remove the shade from the No-Drill Headrail system following the instructions in the installation booklet that came with your shade. Hold the mounting system securely with one hand. Use a flat head screwdriver to pry open the locking lever.

**CAUTION:** Lever will release abruptly. Keep hand clear of lever.



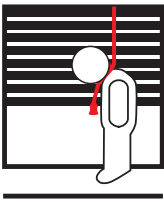
## INSTALLATION INSTRUCTIONS

### 4. Adjusting Moveable End Cap



The moveable end cap is designed to only pull out with out tools. If for some reason the end cap needs to be compressed you will need a small flat head screw driver. (1) Use the screw driver to turn the locking tab release screws as shown. (2) Push the End Cap in. (3) Return the locking tabs to their original position

### Child Safety

| <b>! WARNING ! ADVERTENCIA</b>                                                     |                                                                                                                                                                                                                                                                                                               |
|------------------------------------------------------------------------------------|---------------------------------------------------------------------------------------------------------------------------------------------------------------------------------------------------------------------------------------------------------------------------------------------------------------|
|  | <b>Window Blind Cord Strangulation Risk</b>                                                                                                                                                                                                                                                                   |
|                                                                                    | Window blinds with a damaged or loose tension device or retractable cord that fails to fully retract pose a strangulation risk to children. To avoid this potential strangulation risk, consider purchasing cordless products or products with inaccessible cords.                                            |
|                                                                                    | <b>Riesgo de Estrangulamiento en Cuerdas de Persianas</b>                                                                                                                                                                                                                                                     |
|                                                                                    | Las persianas con un dispositivo tensor suelto o dañado o con una cuerda retráctable que no se ajusta completamente representan un riesgo de estrangulación para los niños. Para evitar un posible riesgo de estrangulamiento, considere comprar productos inalámbricos o productos con cuerdas inaccesibles. |
|                                                                                    | 23-0012-020                                                                                                                                                                                                                                                                                                   |